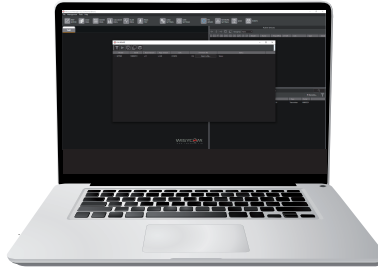
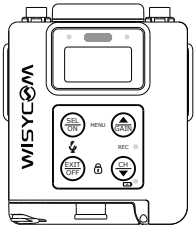


1



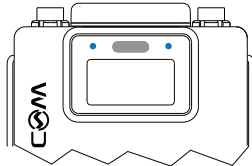
Connect MTP60 to PC via USB-C cable

Run Wisycom Manager v3.3.0

Select FW UPDATE and
select the file
"MTP60_BL_v1.2.0"



2



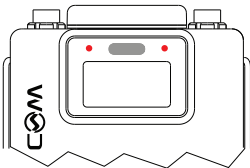
During the upgrade the LED above
the display are **blues**

**This process is critical,
you could lose the unit
DO NOT SWITCH OFF OR
DISCONNECT THE UNIT**

3

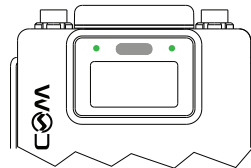


The process will take approx. 45 sec



FAULT

If the LED become **blinking red**,
it means that the process faulted
and the unit has to be send to Wisycom for service.
(Please contact your local distributor)



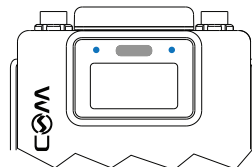
SUCCESS

The upgrade is completed with success
when both LED above the display become **fixed green**

4



Push SEL/ON button to continue
the upgrade of the firmware



The LEDs turn **blues**

Now you can select the new
firmware